



Stella Doradus

StellaOffice Repeater

Commercial grade, cellular repeaters for large buildings.

StellaOffice Series



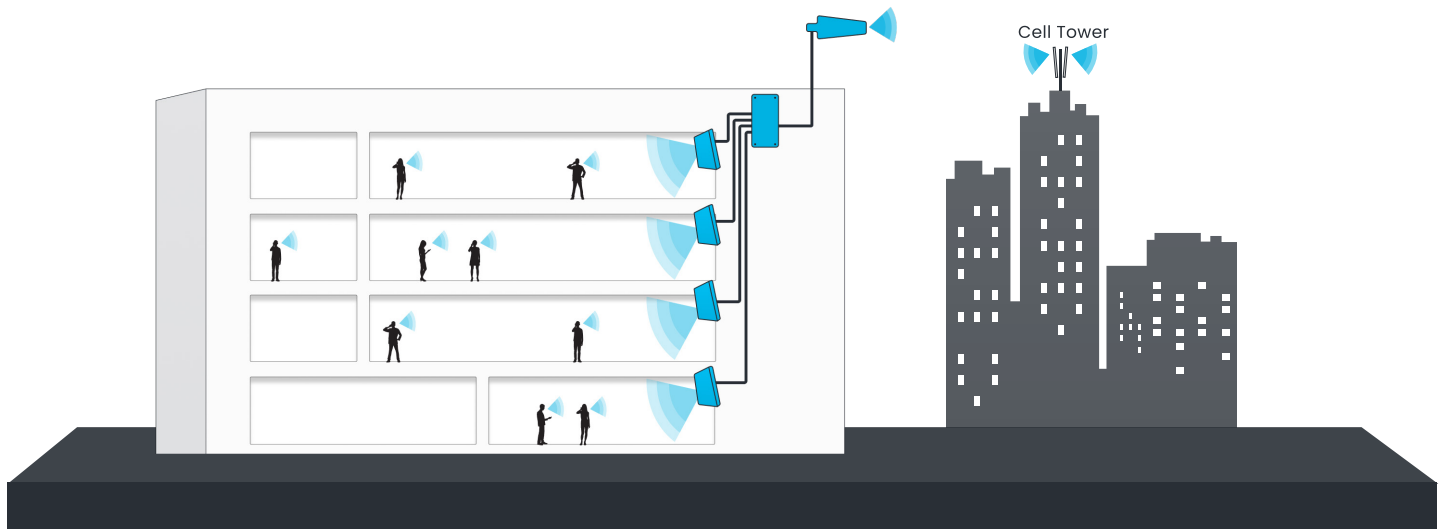
MODEL	WEIGHT	DIMS CM	FREQ (MHZ)	PORTS
R2-O	2KG	25x17x3.5	800/900	4
R3-O	3KG	35x17x3.5	800/900/1800	4
R5-O	4KG	35x30x4.3	700/800/900/1800/2100	4

The StellaOffice is a commercial grade, cellular repeater which amplifies mobile coverage in large buildings on all operators, enabling clear voice calls in the office, as well as supporting the fastest internet speeds: 5G/4G/3G/2G.

This powerful repeater has 4 ports for connecting 4 indoor antennas, which increase the coverage to between 5 and 15 internal rooms, depending on the size and shape of the room. Several frequency combinations are available, see above.

How it Works

An external antenna, installed on the roof of the building, receives the signal from all mobile operators. This signal is passed inside the building to a repeater, which amplifies the signal and passes it to all desired areas in the office via multiple indoor antennas. All mobile phones and 5G/4G and GSM devices will now have full signal for calls and fast data.



4X Internal
antennas



Internal cables
3/4 x15m SD400
(Model Dependant)



StellaOffice
Repeater



External 15m
cable SD400



External
Antenna

Do not use Stella repeaters with non Stella equipment.

Stella repeaters operate silently on the operators network. Using Stella equipment with other manufacturers equipment will break this control system and could potentially harm the operators network. Doing so will void warranty.

Specifications

EU Bands	B28	B20	B8	B3	B1
Downlink	758-788	791-821	925-960	1805-1880	2110-2170
Uplink	703-733	832-862	880-915	1710-1785	1920-1980

Amplifier Specification

Coverage	5-15 Rooms				
Gain	Uplink Gp: 60dB Downlink Gp> 60dB				
Pass band ripple	<4dB				
I/O impedance	50 ohm/SMA female connector				
Max up/down signal strength	20dBm / 10dBm				
Ambient Temperature	-30°C to +70°C				
Power supply input	110 - 240V AC				
Power supply output	12v DC				
Oscillation Control	Automatic				
AGC Level Control:	Automatic ¹				
Uplink Switch On	Yes ²				
AGC Range	0 to 30dB				
Surge protection	SMA connectors DC grounded, 12V DC port MOV protected				

Antennas	Indoor Panel	Outdoor Yagi
Nominal Gain	6.4dBi / 9.4dBi	10dBi
3dB beam Pattern	60° x 60°	60° x 50°
Bandwidth	700MHz - 2700MHz	700MHz - 2700MHz
VSWR	<1.4	<1.5
Front to Back Ratio	> 20dB	> 20dB
Polarization	Vertical	Vertical
Power Rating	50W	50W
Impedance	50-OHM	50-OHM
Termination	SMA male / N-Female	N-Female
Cross Pol. Discrimination	-20dB	-20dB
Dimensions	210 x 180 x 43mm	442 x 205 x 62mm
Weight	0.68kg	1.2kg
Wind velocity	126km/hr	140km/hr
Working temperature	-40°C to +65°C	-40°C to +65°C



Stella Doradus

Coolfinn, Portlaw, Waterford, Ireland

P. +353 51 387145 info@stelladoradus.com
www.stelladoradus.com